

[OFP]

TSC0614 15JUN2020 CYFB-CYYR B738 CGTQB RELEASE 0521 15JUN20
 OFP 1 IQALUIT-GOOSE BAY
 WX PROG 1503 1506 1509 1512 OBS 1500 1500 1500 1500

| | | | | | |
|------------|------------|-----------|-----------|----------|------|
| ATC C/S | TSC614 | CYFB/YFB | CYYR/YYR | CRZ SYS | CI 5 |
| 15JUN2020 | CGTQB | 0521/0526 | 0716/0719 | GND DIST | 712 |
| B737-800 / | CFM56-7B26 | | STA 0736 | AIR DIST | 699 |
| | | CTOT:.... | | G/C DIST | 675 |

| | | | | | |
|-----------|------------|------------|------------|---------------|---------|
| MAXIMUM | TOW 174200 | LAW 146300 | ZFW 138300 | AVG WIND | 260/031 |
| ESTIMATED | TOW 155792 | LAW 145398 | ZFW 132214 | AVG W/C | P007 |
| | | | | AVG ISA | P005 |
| | | | | AVG FF LBS/HR | 5665 |
| | | | | FUEL BIAS | P00.0 |
| | | | | TKOF ALTN | |

ALTN CYQM
 FL STEPS CYFB/0340/

DISP RMKS NIL

PLANNED FUEL

| FUEL | ARPT | FUEL | TIME |
|----------------------|------|-------|------|
| TRIP | YJR | 10394 | 0150 |
| CONT 15 MIN | | 1416 | 0015 |
| ALTN | YQM | 9396 | 0150 |
| FINRES | | 2372 | 0030 |
| MINIMUM T/OFF FUEL | | 23578 | 0425 |
| EXTRA | | 0 | 0000 |
| T/OFF FUEL | | 23578 | 0425 |
| TAXI | YFB | 250 | 0005 |
| BLOCK FUEL | YFB | 23828 | |
| PIC EXTRA | | | |
| TOTAL FUEL | | | |
| REASON FOR PIC EXTRA | | | |

NO TANKERING RECOMMENDED (P)

I HEREWITH CONFIRM THAT I HAVE PERFORMED A THOROUGH SELF BRIEFING ABOUT THE DESTINATION AND ALTERNATE AIRPORTS OF THIS FLIGHT INCLUDING THE APPLICABLE INSTRUMENT APPROACH PROCEDURES, AIRPORT FACILITIES, NOTAMS AND ALL OTHER RELEVANT PARTICULAR INFORMATION.

DISPATCHER: DOUGLAS BULLOCK

PIC NAME: EDWARDS, JOHN

TEL: +1 800 555 0199

PIC SIGNATURE:



ALTERNATE ROUTE TO: FINRES 2372
 APT TRK DST VIA FL WC TIME FUEL

 CYQM/06 202 614 DCT YYR L600 YZV DCT CL RR22 380 M028 0150 9396
 F9 DCT YQM DCT

MEL/CDL ITEMS DESCRIPTION

ROUTING:

ROUTE ID: DEF RTE
 CYFB/34 DCT JELCO DCT LOMTA DCT UYR DCT CYR/26

DEPARTURE ATC CLEARANCE:

.
 .
 .

OPERATIONAL IMPACTS

 WEIGHT CHANGE UP 1.0 TRIP P 0057 LBS TIME M 0000
 WEIGHT CHANGE DN 1.0 TRIP M 0063 LBS TIME P 0000
 FL CHANGE UP FL1 TRIP P 0081 LBS TIME M 0003
 FL CHANGE DN FL1 TRIP M 0348 LBS TIME P 0001
 FL CHANGE DN FL2 TRIP P 0690 LBS TIME P 0002
 SPD CHANGE CI 0 TRIP M 0030 LBS TIME P 0000
 SPD CHANGE CI 100 TRIP P 0281 LBS TIME M 0003



ATIS:
.

RVSM: ALT SYS LEFT: STBY: RIGHT:

TIMES

| | ESTIMATED | SKED | ACTUAL |
|------------|-------------|-------------|--------|
| OUT | 0521Z/0121L | 0521Z/0121L |Z |
| OFF | 0526Z/0126L | 0526Z/0126L |Z |
| ON | 0716Z/0416L | 0733Z/0433L |Z |
| IN | 0719Z/0419L | 0736Z/0436L |Z |
| BLOCK TIME | 0158 | 0215 | |

WEIGHTS

| | EST | MAX | ACTUAL | |
|-----------|-------|-------|----------|----------------|
| PAX | 174 | | | |
| CARGO | 0.3 | | | |
| PAYLOAD | 40.3 | | | |
| ZFW | 132.2 | 138.3 | | |
| FUEL | 23.8 | 24.7 | | POSS EXTRA 0.9 |
| TOW | 155.8 | 156.7 | LDG..... | |
| STAB TRIM | | | | |
| LAW | 145.4 | 146.3 | | |

TERRAIN CLEARANCE CHECK

DD CHECK - TERRAIN CLEARANCE CHECK DISABLED

DP CHECK - TERRAIN CLEARANCE CHECK DISABLED

FLIGHT LOG

MOST CRITICAL MORA 05700 FEET AT JELCO//MXSHR 02 AT TOC

| AWY POSITION IDENT FREQ | LAT LONG | EET TTLT | ETO ATO | FL MORA DIS | IMT ITT RDIS | MN TAS GS | WIND COMP SHR | OAT TDV TRP | EFOB AFOB | PBRN ABRN |
|-------------------------------------|---------------------|--------------|------------|-------------------|--------------------|-------------------|----------------------|-------------------|--------------|--------------|
| IQALUIT CYFB | N6345.4 W06833.4 | 0000 | ... | 48 | 193 165 712 | 475 | P014 | | 23.6 | 0.3 |
| DCT T O C | N6208.3 W06741.5 | 0019 | ... | 340 22 120 | 193 166 592 | .78 461 475 | 297/022 P014 2 | M43 P10 282 | 19.8 | 4.0 |
| DCT JELCO JELCO | N6042.0 W06700.0 | 0011 0030 | ... | 340 57 89 | 170 145 503 | .76 451 457 | 272/026 P006 1 | M42 P11 254 | 18.7 | 5.1 |
| GANDER FIR/UIR -CZQX | N5743.8 W06317.0 | 0028 | ... | 208 | 295 | | | | | |
| DCT LOMTA LOMTA | N5712.2 W06237.2 | 0005 0103 | ... | 340 55 42 | 184 161 253 | .76 445 457 | 256/036 P012 2 | M47 P06 288 | 15.8 | 8.0 |
| DCT T O D | N5503.1 W06120.6 | 0019 | ... | 340 41 136 | 184 162 117 | .76 440 438 | 252/053 M002 1 | M52 P01 326 | 14.2 | 9.7 |
| DCT GOOSE (GOOS UYR 110.30 | N5319.2 W06025.0 | 0023 | ... | 027 22 109 | 285 264 8 | .39 259 | 250/015 M001 | 10 P00 358 | 13.5 | 10.3 |
| DCT GOOSE BAY CYR | N5319.2 W06025.5 | 0005 | ... | 8 | | | | | 13.2 | 10.6 |



WIND INFORMATION

| CLIMB | | | T O C | | | JELCO | | | LOMTA | | |
|-------|---------|-----|-------|---------|-----|-------|---------|-----|-------|---------|-----|
| 350 | 297/021 | -43 | 380 | 293/022 | -41 | 380 | 276/024 | -41 | 380 | 262/041 | -45 |
| 310 | 323/016 | -45 | 360 | 296/021 | -42 | 360 | 274/025 | -42 | 360 | 256/045 | -48 |
| 200 | 318/014 | -30 | 340 | 299/021 | -43 | 340 | 272/025 | -42 | 340 | 251/049 | -50 |
| 150 | 300/014 | -21 | 320 | 313/018 | -44 | 320 | 269/024 | -43 | 320 | 256/051 | -50 |
| 100 | 286/015 | -11 | 300 | 334/016 | -45 | 300 | 265/023 | -43 | 300 | 260/053 | -49 |

| T O D | | | DESCENT | | |
|-------|---------|-----|---------|---------|-----|
| 380 | 252/047 | -49 | 350 | 242/060 | -53 |
| 360 | 253/051 | -51 | 310 | 243/060 | -46 |
| 340 | 253/055 | -53 | 200 | 259/034 | -23 |
| 320 | 257/051 | -50 | 150 | 260/024 | -13 |
| 300 | 261/048 | -47 | 100 | 266/016 | -05 |



[ATC Flight Plan]

ICAO FLIGHT PLAN

FF CZULZQZX CZQXZQZX
150521 CYULSBFP
(FPL-TSC614-IS
-B738/M-SDE2E3FGHIRWXY/LB1
-CYFB0521
-N0451F340 DCT JELCO DCT LOMTA DCT UYR DCT
-CYR0140 CYQM
-PBN/A1B1C1D1S1S2 DOF/200615 REG/CGTQB EET/CZQX0058 OPR/TSC PER/C
RMK/TCAS)



[Additional Info]

D I S P A T C H B R I E F I N G I N F O TS0614 CYFB/CYYR



[Airport WX List]

CYFB --> CYR TS 614 / 15JUN2020
LIDO/WEATHER SERVICE DATE : 15Jun2020 TIME : 05:21 UTC

AIRMETs:

No Wx data available

SIGMETs:

No Wx data available

Tropical Cyclone SIGMETs:

No Wx data available

Volcanic Ash SIGMETs:

No Wx data available

Departure:

CYFB/YFB IQALUIT

SA 150515 33015KT 30SM -SN BKN022 00/M02 A2993 RMK SC7 SLP139
FT 142338 1500/1524 34012KT P6SM OVC025
TEMPO 1500/1506 P6SM -RA OVC020
FM150600 33010KT P6SM OVC020
TEMPO 1506/1515 5SM BR OVC008
BECMG 1507/1509 33015KT
FM151500 33015G25KT P6SM OVC030
FM151800 22018G28KT P6SM BKN040 OVC100
TEMPO 1518/1524 P6SM -SHRA
RMK NXT FCST BY 150600Z

Destination:

CYR/YYR GOOSE BAY

SA 150500 23005KT 15SM FEW250 07/01 A3033 RMK CI1 SLP273
FT 142330 1500/1524 23012KT P6SM FEW250
BECMG 1500/1502 22008KT
FM151400 24010G20KT P6SM SCT200
FM151700 25018G28KT P6SM SCT040 BKN080
FM152200 27015G25KT P6SM -SHRA BKN030
RMK NXT FCST BY 150600Z

Destination Alternates:

CYQM/YQM GREATER MONCTON ROMEO LEBLANC

SA 150500 06005KT 15SM OVC039 10/05 A3045 RMK SC8 SLP314
FT 142338 1500/1524 04008KT P6SM OVC040
BECMG 1513/1515 SCT050
FM152300 VRB03KT P6SM SKC
RMK NXT FCST BY 150600Z

AIRPORTLIST ENDED



[NOTAM]

 LIDO-NOTAM-BULLETIN INCLUDES NOTAM, COMP NOTAM AND AIP-REGULATION
VALID: 2006150521 - 2006151209 STD(EOBT)+TRIP+ALTN+3HRS
 TSC 614 /15JUN OFP-NR: 1
 ROUTE: CYFB - CYR ALTN: CYQM
 N0451F340 DCT JELCO DCT LOMTA DCT UYR DCT

=====

DEPARTURE AIRPORT - DETAILED INFO

=====

CYFB/YFB IQALUIT

+++++ AIRPORT +++++

E3155/20
 TWY A: UNEVEN SFC

+++++ RUNWAY +++++

E2603/20
 ONE ROW OF FIVE ALS 34 U/S

+++++ SID +++++

E3137/20
 AMEND PUBLICATIONS: **AD** CHART: DEP PROC: ADD NOTE:
 ALL **RWYS**: PROC NOT AUTH WHEN BLASTING AREA 0.5 NM N OF **RWY** IS
ACTIVE

E3136/20
 AMEND PUBLICATIONS: IQALUIT FIVE DEP:
 DEP ROUTE DESCRIPTION: ALL **RWYS**: ADD NOTE:
 PROC NOT AUTH WHEN BLASTING AREA 0.5 NM N OF **RWY** IS **ACTIVE**

+++++ APPROACH PROCEDURES +++++

H1349/20
 FROBAY (IQALUIT) **NDB** YFY 204KHZ U/S

E3135/20
 AMEND PUBLICATIONS: RNAV (GNSS) **RWY 34** APCH: PLAN VIEW: ADD OPS
 NOTE:
 PROC NOT AUTH WHEN BLASTING AREA 0.5 NM N OF **RWY** IS **ACTIVE**

E3134/20
 AMEND PUBLICATIONS: RNAV (GNSS) **RWY 16** APCH: PLAN VIEW: ADD OPS
 NOTE:
 PROC NOT AUTH WHEN BLASTING AREA 0.5 NM N OF **RWY** IS **ACTIVE**

E3133/20
 AMEND PUBLICATIONS: **ILS RWY 34** APCH: PLAN VIEW: ADD OPS NOTE: PROC
 NOT AUTH WHEN BLASTING AREA 0.5 NM N OF **RWY** IS **ACTIVE**



=====
DESTINATION AIRPORT - DETAILED INFO
=====

CYYR/YYR GOOSE BAY

+++++ AIRPORT +++++

E3108/20
TWY M, N AND Q CLSD
H1263/20
GANDER CENTER PERIPHERAL STATION (PAL) 294.5MHZ AT GOOSE BAY U/S
E2562/20
FOREIGN MILITARY ACFT 12HR PPR
WING OPS 709-896-6900 EXT 7331 1100-1900,
OTHER TIME WING DUTY OFFICER 709-896-1637

+++++ RUNWAY +++++

E3132/20
90 DEG TURNS ON ASPHALT PORTIONS OF RWY 08/26 NOT AUTH FOR ACFT
HEAVIER THAN 71000 KG (157000 LB) EXC AT THR 08 AND 26
E3107/20
RWY 16/34 CLSD.
E2915/20
RWY 16 MOBILE RUNWAY ARRESTING GEAR (RAG) (TYPE BAK-12) 4100 FT
BEYOND THR RWY 16
E2862/20
RAG 26 U/S

+++++ APPROACH PROCEDURES +++++

E3115/20
TACAN RWY 34 (DND) APCH: NOT AUTH
E3113/20
RNAV (GNSS) RWY 34 (DND) APCH: NOT AUTH
E3112/20
RNAV (GNSS) RWY 16 (DND) APCH: NOT AUTH
E3114/20
HI TACAN RWY 34 (DND) APCH: NOT AUTH
H1311/20
GOOSE DME YYR CH120X UNMONITORED
E2898/20
AMEND PUBLICATIONS: ILS Z RWY 08 (DND) : PROFILE VIEW:
ADD IF 14 DME YYR INTERSECTION LINE TO LEFT SIDE OF 2200FT BLOCK
E2897/20
AMEND PUBLICATIONS: ILS Z RWY 08 (DND) : DELETE ?NO PT? ANNOTATION
E2896/20
AMEND PUBLICATIONS: ILS Z RWY 08 (DND) :
15 DME ARC FM YYR R-025 TO IF: MINIMUM ALT TO READ NOT BLW 2800



=====
DESTINATION ALTERNATE AIRPORT(S)
=====

CYQM/YQM GREATER MONCTON ROMEO LEBLANC

+++++ AIRPORT +++++

E3003/20

FUEL 100LL NOT AVBL

E2956/20

ACFT RESCUE AND FIRE FIGHTING (ARFF) DOWNGRADED TO CAT 5

H1043/20

AMEND PUBLICATIONS: RWY DATA: RCR TO READ:
OPR 506-850-8430 10-19Z (DT 09-18Z) MON-FRI EXC HOL O/T 2 HRS PN
CALL OUT CHARGE CRFI/RSC PLR/PCN

=====
EXTENDED AREA AROUND DEPARTURE
=====

CZUL MONTREAL FIR

+++++ FIR/UIR +++++

H1363/20

MONTREAL CENTRE PERIPHERAL STATION (PAL)
134.225MHZ AT LAC LEVESQUE U/S

H1290/20

COVID-19: FLIGHT RESTRICTIONS
UNTIL FURTHER NOTICE, WITH THE INTENT TO PREVENT THE SPREAD OF
COVID-19 THROUGHOUT CANADA, ALL PRIVATE OPR AND COMMERCIAL AIR SVC
OPR FLT TO CANADA TRANSPORTING PASSENGERS MUST COMPLY WITH THE
PROVISION OF THE 'INTERIM ORDER TO PREVENT CERTAIN PERSONS FROM
BOARDING FLT TO CANADA DUE TO COVID-19, NO. 10 ' DATED JUNE 4,
2020. THIS INCLUDES A REQUIREMENT FOR PASSENGER FACE MASKS OR
COVERINGS.

IN ADDITION TO ABV, AND PURSUANT TO SECTION 5.1 OF THE AERONAUTICS
ACT, ALL COMMERCIAL AIR SVC CONDUCTING SKED INTERNATIONAL SVC FOR
THE TRANSPORT OF PASSENGERS ON AN INBOUND FLT TO CANADA, EXC
DIRECT FLT FM THE USA, MEXICO, CENTRAL AMERICA, THE CARIBBEAN,
SOUTH AMERICA, AND ST-PIERRE ET MIQUELON, MUST, FOR THE PURPOSE OF
DISEMBARKING PASSENGERS, LAND AT ONE OF THE FLW AP:

- AEROPORT INTL DE MONTREAL-TRUDEAU
-CALGARY INTL AIRPORT
-TORONTO-PEARSON INTL AIRPORT
-VANCOUVER INTL AIRPORT

THIS RESTRICTION DOES NOT APPLY TO ACFT OPERATED IN THE FLW
CIRCUMSTANCES:

- TECHNICAL STOPS WHERE PASSENGERS DO NOT DISEMBARK, OR
-AT ALTERNATE AP IDENTIFIED IN A FLT PLAN TO ADDRESS WX, OR
-ACFT SAFETY SITUATIONS, OR
-IN THE CASE WHERE SPECIAL AUTH HAS BEEN GRANTED BY TRANSPORT
CANADA: 1-888-857-4003.
F) SFC G) UNL



H1289/20

COVID-19: FLIGHT RESTRICTIONS
UNTIL FURTHER NOTICE, WITH THE INTENT TO PREVENT THE SPREAD OF COVID-19 THROUGHOUT CANADA, AN OPERATOR OPERATING FLIGHTS IN CANADA MUST COMPLY WITH THE PROVISION OF THE 'INTERIM ORDER TO PREVENT CERTAIN PERSONS FROM BOARDING FLIGHTS IN CANADA DUE TO COVID-19, NO. 7 ' DATED JUNE 4, 2020. THIS INCLUDES A REQUIREMENT FOR PASSENGER FACE MASKS. OPERATORS ARE REQUIRED TO NOTIFY PASSENGERS OF THE LATEST MEASURES TO PREVENT THE SPREAD OF COVID-19 TAKEN BY THE TERRITORIAL AND PROVINCIAL GOVERNMENT WITH JURISDICTION AT THE DESTINATION AERODROME FOR THAT FLIGHT.
F) SFC G) UNL

H1158/20

COVID 19: INFORMATION
BORDER SVC ARE TEMPO **SUSPENDED** AT THE MAJORITY OF SMALL AIRPORTS ACROSS CANADA. FOR AN UPDATED LIST OF AUTH AIRPORTS OF ENTRY SEE THE LINK FOR OPEN PORTS OF ENTRY AT WWW.CBSA-ASFC.GC.CA/OFFICES

H0972/20

COVID-19: CREWS/PASSENGERS REQUIREMENTS
ALL FOREIGN MIL AND STATE ACFT WITH STOP OVERS IN CANADA TO CTC SODO(AT)FORCES.GC.CA OR CALL (204) 833-2500 EXT 2082 PRIOR TO FILING FLT PLAN
F) SFC G) UNL

H0655/20

AIRSPACE SECURITY WARNING ISSUED BY THE DEPARTMENT OF TRANSPORT IN RESPONSE TO THE SECURITY SITUATION IN IRAQ. POTENTIAL RISK FROM MILITARY ACTIVITY AND ANTI-AVIATION WEAPONRY IN IRAQ. AIR OPERATORS ARE ADVISED NOT TO ENTER THE AIRSPACE OF IRAQ, INCLUDING THE BAGHDAD FIR (ORBB).

H0413/20

AIRSPACE SECURITY WARNING ISSUED BY THE DEPARTMENT OF TRANSPORT IN RESPONSE TO THE POTENTIAL RISK DUE TO THE HAZARDOUS SITUATION CREATED BY THE EXPANDING CONFLICT IN LIBYA. AIR OPR ARE ADVISED NOT TO ENTER THE AIRSPACE OF LIBYA, INCLUDING THE TRIPOLI FIR (HLLL).

H0330/20

AIRSPACE SECURITY WARNING ISSUED BY THE DEPARTMENT OF TRANSPORT IN RESPONSE TO THE POTENTIAL RISK FM HEIGHTENED MIL ACT AND DEDICATED ANTI-AVIATION WEAPONRY IN OR AROUND SYRIA. THIS MIL ACT MIGHT INCLUDE GPS INTERFERENCE, COM JAMMING, AND POSSIBLE ERRANT LONG-RANGE SURFACE-TO-AIR MISSILES ORIGINATING FM SYRIAN TERRITORY, WITHIN THE DAMASCUS FIR (OSTT), AND STRAYING INTO ADJ AIRSPACE. AIR OPR ARE ADVISED NOT TO ENTER THE AIRSPACE OF SYRIA, INCLUDING THE DAMASCUS FIR (OSTT), AND TO EXER **CAUTION** WHEN OPR IN THE AIRSPACE WITHIN 200NM OF THE DAMASCUS FIR (OSTT).

H0047/20

AIRSPACE SECURITY WARNING ISSUED BY THE DEPARTMENT OF TRANSPORT IN RESPONSE TO THE VOLATILE SECURITY SITUATION IN IRAN. POTENTIAL RISK FROM HEIGHTENED MILITARY ACTIVITY AND DEDICATED ANTI-AVIATION WEAPONRY IN IRAN. AIR OPERATORS ARE ADVISED NOT TO ENTER THE AIRSPACE OF IRAN, INCLUDING THE TEHRAN FIR (OIIX

+++++ WAYPOINT +++++

H1322/20

BEAUCE (ST-GEORGES) **VOR** VLV 117.2MHZ **U/S**



+++++ RESTRICTED AIRSPACE +++++

H1298/20 VALID: 15-JUN-20 1200 - 20-JUN-20 0400

DAILY 1200-0400
RESTRICTED AREA CYR602 VALCARTIER ACT
F) 7000FT AMSL G) 17000FT AMSL

N1460/20

MODEL ACFT ACT WILL TAKE PLACE WITHIN
0.15NM RADIUS CENTRED ON 461446N 725416W
(LOUISEVILLE AD)
SFC TO 763FT AGL 803FT AMSL
SR-SS
F) SFC G) 763FT AGL

N1436/20

DAILY 1000-0000
BLASTING ACT WILL TAKE PLACE 1640FT RADIUS CENTRED ON 545341N
670418W (APRX 10NM NW SCHEFFERVILLE/SQUAW LAKE
(WATER))
F) SFC G) 656FT AGL

N1166/20

MON-FRI 1100-2300
NEW BLASTING AREA BOUNDED BY 474615N 692804W- 474711N
692715W-474531N 692304W-474458N 692510W- 474615N 692804W (CENTRED
APRX 6NM E CYRI AD)
SFC TO 394FT AGL
F) SFC G) 1000FT AMSL

N1163/20

MON-FRI 1100-2300
BLASTING ACT WILL TAKE PLACE WITHIN
474531N 692304W - 474146N 691446W - 474156N 690441N -
474037N 685929W - 473900N 690046W - 474104N 690808W -
474040N 691426W - 474458N 692510W - 474531N 692304W
(APRX 16NM ESE RIVIERE-DU-LOUP AD)
SFC TO 394FT AGL
F) SFC G) 1893FT AMSL

H0940/20

AMEND PUBLICATIONS: BLASTING ACT WILL TAKE PLACE 0.3NM RADIUS
CENTRED ON 454258N 0740221W
(APRX 3300FT BEYOND THR 24 AND 14920FT NW
RCL MONTREAL INTL(MIRABEL)AD)
5000FT AGL 5262 FT AMSL
F) SFC G) 5262FT AMSL

H0083/19

PURSUANT TO SECTION 5.1 OF THE AERONAUTICS ACT, THE MINISTER
OF TRANSPORT IS OF THE OPINION IT IS NECESSARY FOR THE PROTECTION
OF AVIATION SAFETY AND THE PUBLIC TO PROHIBIT THE OPS OF
BOEING 737-8 MAX AND 737-9 MAX ACFT IN CANADIAN AIRSPACE.
B737-8 MAX OR B737-9 MAX ACFT ARE PROHIBITED FM OPR IN CANADIAN
AIRSPACE EXC FOR FERRY FLIGHTS OR ACFT IN FLIGHT FOR THE DURATION
OF THAT FLIGHT ENROUTE TO OR FM OR WITHIN CANADA AT THE TIME THIS
NOTICE TAKES EFFECT.
F) SFC G) UNL

N0010/19

AMEND PUBLICATIONS: BLASTING ACT 5000 FT RADIUS CENTRED ON 550506N
671925W (APRX 24NM NNW SCHEFFERVILLE/SQUAW LAKE (WATER) AD) SFC TO
3281FT AGL 5997FT AMSL
F) SFC G) 6000FT AMSL



N0009/19

AMEND PUBLICATIONS: BLASTING ACT 1.1NM RADIUS CENTRED ON 550257N 671604W (APRX 21NM NNW SCHEFFERVILLE/SQUAW LAKE (WATER) AD) SFC TO 1640FT AGL 4396FT AMSL F) SFC G) 4400FT AMSL

N0007/19

AMEND PUBLICATIONS: BLASTING ACT WILL TAKE PLACE 3609FT RADIUS CENTRED ON 514104N 755042W (APRX 11NM ESE NEMISCAU AD) SFC TO 1312FT AGL 2369FT AMSL F) SFC G) 2400FT AMSL

N0011/19

AMEND PUBLICATIONS: BLASTING ACT RADIUS 492FT CENTRED ON 473842N 701432W (APRX 3NM N CHARLEVOIX AD) SFC TO 295FT AGL 1772FT AMSL F) SFC G) 1772FT AMSL

N0060/19

AMEND PUBLICATIONS: BLASTING ACT WILL TAKE PLACE 0.5NM RADIUS CENTRED ON 464241N 713502W (APRX 0.7NM SSW QUEBEC/NEUVILLE AD) SFC TO 500FT AGL 828FT AMSL F) SFC G) 828FT AMSL

+++++ ROUTE +++++

N1383/20

V365: BTN YUY AND YVO: MEA/MOCA TO READ 4200
V487: BTN YUY AND YVO: MEA/MOCA TO READ 4200
V372: BTN DEGMO AND YVO: MEA/MOCA TO READ 4200

N1382/20

SID MUNBI THREE DEP: V365: BTN YUY AND YVO: MEA/MOCA TO READ 4200

H1226/20

NOTICE OF TRIAL TO REMOVE FLT PLANNING REQUIREMENTS OF EASTBOUND NORTH AMERICAN ROUTE (NAR) SYSTEM:
ALL FLTS DEP FM CYYZ, CYUL, KORD, KDTW AND KMSP OPERATING WITHIN THE NORTH ATLANTIC ORGANIZED TRACK STRUCTURE, ARE NOT REQUIRED TO FILE THE ASSOCIATED NAR LISTED ON THE DLY ZBW NORTH ATLANTIC ADVISORY OR THE NAT OTS MESSAGE. ASSOCIATED NAR ARE REFERENCED UNDER THE (JFK DEP) SECTION OF THE ADVISORY.
DEPS MUST STILL COMPLY WITH ANY DEP ROUTES, STRUCTURES, AND/OR RESTRICTIONS FM THE DEP AIRPORT. OPTIMIZED ROUTINGS CAN ONLY BEGIN FM POINTS WITHIN ZBW AIRSPACE, THE MONCTON FIR, OR BOTH. ONCE INSIDE ZBW AIRSPACE/MONCTON FIR, RANDOM ROUTINGS TO THE OEP ARE PERMITTED. FLT PATHS OF ACFT PARTICIPATING IN THE TRIAL MUST REMAIN AT OR NORTH OF A LINE VITOL-LOMPI. PLEASE REFER TO DLY ZBW NORTH ATLANTIC ADVISORY FOR SPECIFIC INFO AND STATUS OF THIS TRIAL.
THIS TRIAL MAY BE DISCONTINUED AT ANY TIME, BASED ON OPERATIONAL IMPACT.
DISPATCHERS SHALL INCLUDE (NO NARS EAST TRIAL) IN THE REMARKS SECTION OF FLT PLANS FOR PARTICIPATING ACFT.
FLT CREWS ARE EXPECTED TO CARRY APPLICABLE NAR DOCUMENTATION ON THE FLT DECK FOR ALL FLTS, REGARDLESS IF PARTICIPATING IN THE TRIAL OR NOT.

H1143/20

V372 BTN YVO AND TAGET **NOT SUITABLE** FOR VOR NAV

H1009/20

J551 BTN YWK AND MT **NOT SUITABLE** FOR VOR NAV

N0979/20

J593 BTN YVO AND YLQ **NDB IS NOT SUITABLE** FOR VOR NAV



=====
EXTENDED AREA AROUND DESTINATION
=====

CZQX GANDER OCEANIC FIR/UIR

+++++ FIR/UIR +++++

H1363/20

MONTREAL CENTRE PERIPHERAL STATION (PAL)
134.225MHZ AT LAC LEVESQUE U/S

H1290/20

COVID-19: FLIGHT RESTRICTIONS
UNTIL FURTHER NOTICE, WITH THE INTENT TO PREVENT THE SPREAD OF
COVID-19 THROUGHOUT CANADA, ALL PRIVATE OPR AND COMMERCIAL AIR SVC
OPR FLT TO CANADA TRANSPORTING PASSENGERS MUST COMPLY WITH THE
PROVISION OF THE 'INTERIM ORDER TO PREVENT CERTAIN PERSONS FROM
BOARDING FLT TO CANADA DUE TO COVID-19, NO. 10 ' DATED JUNE 4,
2020. THIS INCLUDES A REQUIREMENT FOR PASSENGER FACE MASKS OR
COVERINGS.

IN ADDITION TO ABV, AND PURSUANT TO SECTION 5.1 OF THE AERONAUTICS
ACT, ALL COMMERCIAL AIR SVC CONDUCTING SKED INTERNATIONAL SVC FOR
THE TRANSPORT OF PASSENGERS ON AN INBOUND FLT TO CANADA, EXC
DIRECT FLT FM THE USA, MEXICO, CENTRAL AMERICA, THE CARIBBEAN,
SOUTH AMERICA, AND ST-PIERRE ET MIQUELON, MUST, FOR THE PURPOSE OF
DISEMBARKING PASSENGERS, LAND AT ONE OF THE FLW AP:

- AEROPORT INTL DE MONTREAL-TRUDEAU
-CALGARY INTL AIRPORT
-TORONTO-PEARSON INTL AIRPORT
-VANCOUVER INTL AIRPORT

THIS RESTRICTION DOES NOT APPLY TO ACFT OPERATED IN THE FLW
CIRCUMSTANCES:

- TECHNICAL STOPS WHERE PASSENGERS DO NOT DISEMBARK, OR
-AT ALTERNATE AP IDENTIFIED IN A FLT PLAN TO ADDRESS WX, OR
-ACFT SAFETY SITUATIONS, OR
-IN THE CASE WHERE SPECIAL AUTH HAS BEEN GRANTED BY TRANSPORT
CANADA: 1-888-857-4003.

F) SFC G) UNL

H1289/20

COVID-19: FLIGHT RESTRICTIONS
UNTIL FURTHER NOTICE, WITH THE INTENT TO PREVENT THE SPREAD OF
COVID-19 THROUGHOUT CANADA, AN OPERATOR OPERATING FLIGHTS IN
CANADA MUST COMPLY WITH THE PROVISION OF THE 'INTERIM ORDER TO
PREVENT CERTAIN PERSONS FROM BOARDING FLIGHTS IN CANADA DUE TO
COVID-19, NO. 7 ' DATED JUNE 4, 2020. THIS INCLUDES A REQUIREMENT
FOR PASSENGER FACE MASKS. OPERATORS ARE REQUIRED TO NOTIFY
PASSENGERS OF THE LATEST MEASURES TO PREVENT THE SPREAD OF
COVID-19 TAKEN BY THE TERRITORIAL AND PROVINCIAL GOVERNMENT WITH
JURISDICTION AT THE DESTINATION AERODROME FOR THAT FLIGHT.

F) SFC G) UNL

H1221/20

GANDER OCEANIC CLR DELIVERY SVC NOT AVBL.
EASTBOUND OCEANIC FLT WILL REC CLR BY MONCTON, MONTREAL OR
GANDER ACC. OPR ARE TO REQUEST THEIR CLR ON CONTROL FREQ.

H1158/20

COVID 19: INFORMATION
BORDER SVC ARE TEMPO SUSPENDED AT THE MAJORITY OF SMALL
AIRPORTS ACROSS CANADA. FOR AN UPDATED LIST OF AUTH AIRPORTS OF
ENTRY SEE THE LINK FOR OPEN PORTS OF ENTRY AT
WWW.CBSA-ASFC.GC.CA/OFFICES



H0972/20

COVID-19:CREWS/PASSENGERS REQUIREMENTS
ALL FOREIGN MIL AND STATE ACFT WITH STOP OVERS IN CANADA TO CTC
SODO(AT)FORCES.GC.CA OR CALL
(204) 833-2500 EXT 2082 PRIOR TO FILING FLT PLAN
F) SFC G) UNL

H0829/20

FOR A PERIOD OF 3 MONTHS COMMENCING APR 1,2020
NON-DLM COMPLIANT ACFT MAY FLT PLAN AND OPERATE WITHIN THE GANDER
OCA BTN FL290 AND FL410

H0655/20

AIRSPACE SECURITY WARNING ISSUED BY THE DEPARTMENT OF TRANSPORT IN
RESPONSE TO THE SECURITY SITUATION IN IRAQ. POTENTIAL RISK FROM
MILITARY ACTIVITY AND ANTI-AVIATION WEAPONRY IN IRAQ.
AIR OPERATORS ARE ADVISED NOT TO ENTER THE AIRSPACE OF IRAQ,
INCLUDING THE BAGHDAD FIR (ORBB).

H0413/20

AIRSPACE SECURITY WARNING ISSUED BY THE DEPARTMENT OF TRANSPORT IN
RESPONSE TO THE POTENTIAL RISK DUE TO THE HAZARDOUS SITUATION
CREATED BY THE EXPANDING CONFLICT IN LIBYA. AIR OPR ARE ADVISED
NOT TO ENTER THE AIRSPACE OF LIBYA, INCLUDING THE TRIPOLI FIR
(HLLL).

H0330/20

AIRSPACE SECURITY WARNING ISSUED BY THE DEPARTMENT OF TRANSPORT IN
RESPONSE TO THE POTENTIAL RISK FM HEIGHTENED MIL ACT AND DEDICATED
ANTI-AVIATION WEAPONRY IN OR AROUND SYRIA. THIS MIL ACT MIGHT
INCLUDE GPS INTERFERENCE, COM JAMMING, AND POSSIBLE ERRANT
LONG-RANGE SURFACE-TO-AIR MISSILES ORIGINATING FM SYRIAN
TERRITORY, WITHIN THE DAMASCUS FIR (OSTT), AND STRAYING INTO ADJ
AIRSPACE. AIR OPR ARE ADVISED NOT TO ENTER THE AIRSPACE OF SYRIA,
INCLUDING THE DAMASCUS FIR (OSTT), AND TO EXER **CAUTION** WHEN OPR IN
THE AIRSPACE WITHIN 200NM OF THE DAMASCUS FIR (OSTT).

H0047/20

AIRSPACE SECURITY WARNING ISSUED BY THE DEPARTMENT OF TRANSPORT IN
RESPONSE TO THE VOLATILE SECURITY SITUATION IN IRAN. POTENTIAL
RISK FROM HEIGHTENED MILITARY ACTIVITY AND DEDICATED ANTI-AVIATION
WEAPONRY IN IRAN. AIR OPERATORS ARE ADVISED NOT TO ENTER THE
AIRSPACE OF IRAN, INCLUDING THE TEHRAN FIR (OIIX

+++++ WAYPOINT +++++

N1051/20

CHARLOTTETOWN **NDB** 1D 346KHZ **U/S**

N1050/20

BLACK TICKLE **NDB** 1E 349KHZ **U/S**

+++++ RESTRICTED AIRSPACE +++++

N1481/20 VALID: 15-JUN-20 1130 - 15-JUN-20 1430

BLASTING ACT WILL TAKE PLACE 0.5NM RADIUS CENTRED ON 524638N
0595630W (APRX 37NM SSE GOOSE BAY AD)
F) SFC G) 100FT AMSL

H1354/20

RESTRICTED AREA CYR727 (AREA 1) GOOSE BAY DEACTIVATED
F) 5000FT AMSL G) 12500FT AMSL



H0083/19

PURSUANT TO SECTION 5.1 OF THE AERONAUTICS ACT, THE MINISTER OF TRANSPORT IS OF THE OPINION IT IS NECESSARY FOR THE PROTECTION OF AVIATION SAFETY AND THE PUBLIC TO PROHIBIT THE OPS OF BOEING 737-8 MAX AND 737-9 MAX ACFT IN CANADIAN AIRSPACE. B737-8 MAX OR B737-9 MAX ACFT ARE PROHIBITED FM OPR IN CANADIAN AIRSPACE EXC FOR FERRY FLIGHTS OR ACFT IN FLIGHT FOR THE DURATION OF THAT FLIGHT ENROUTE TO OR FM OR WITHIN CANADA AT THE TIME THIS NOTICE TAKES EFFECT.
 F) SFC G) UNL

+++++ ROUTE +++++

H1226/20

NOTICE OF TRIAL TO REMOVE FLT PLANNING REQUIREMENTS OF EASTBOUND NORTH AMERICAN ROUTE (NAR) SYSTEM:
 ALL FLTS DEP FM CYYZ, CYUL, KORD, KDTW AND KMSP OPERATING WITHIN THE NORTH ATLANTIC ORGANIZED TRACK STRUCTURE, ARE NOT REQUIRED TO FILE THE ASSOCIATED NAR LISTED ON THE DLY ZBW NORTH ATLANTIC ADVISORY OR THE NAT OTS MESSAGE. ASSOCIATED NAR ARE REFERENCED UNDER THE (JFK DEP) SECTION OF THE ADVISORY.
 DEPS MUST STILL COMPLY WITH ANY DEP ROUTES, STRUCTURES, AND/OR RESTRICTIONS FM THE DEP AIRPORT. OPTIMIZED ROUTINGS CAN ONLY BEGIN FM POINTS WITHIN ZBW AIRSPACE, THE MONCTON FIR, OR BOTH. ONCE INSIDE ZBW AIRSPACE/MONCTON FIR, RANDOM ROUTINGS TO THE OEP ARE PERMITTED. FLT PATHS OF ACFT PARTICIPATING IN THE TRIAL MUST REMAIN AT OR NORTH OF A LINE VITOL-LOMPI. PLEASE REFER TO DLY ZBW NORTH ATLANTIC ADVISORY FOR SPECIFIC INFO AND STATUS OF THIS TRIAL.
 THIS TRIAL MAY BE DISCONTINUED AT ANY TIME, BASED ON OPERATIONAL IMPACT.
 DISPATCHERS SHALL INCLUDE (NO NARS EAST TRIAL) IN THE REMARKS SECTION OF FLT PLANS FOR PARTICIPATING ACFT.
 FLT CREWS ARE EXPECTED TO CARRY APPLICABLE NAR DOCUMENTATION ON THE FLT DECK FOR ALL FLTS, REGARDLESS IF PARTICIPATING IN THE TRIAL OR NOT.

=====
EXTENDED AREA AROUND DESTINATION ALTERNATE AIRPORT(S)
 =====

CZQM MONCTON FIR

+++++ FIR/UIR +++++

H1363/20

MONTREAL CENTRE PERIPHERAL STATION (PAL)
 134.225MHZ AT LAC LEVESQUE U/S

**H1290/20**

COVID-19: FLIGHT RESTRICTIONS

UNTIL FURTHER NOTICE, WITH THE INTENT TO PREVENT THE SPREAD OF COVID-19 THROUGHOUT CANADA, ALL PRIVATE OPR AND COMMERCIAL AIR SVC OPR FLT TO CANADA TRANSPORTING PASSENGERS MUST COMPLY WITH THE PROVISION OF THE 'INTERIM ORDER TO PREVENT CERTAIN PERSONS FROM BOARDING FLT TO CANADA DUE TO COVID-19, NO. 10 ' DATED JUNE 4, 2020. THIS INCLUDES A REQUIREMENT FOR PASSENGER FACE MASKS OR COVERINGS.

IN ADDITION TO ABV, AND PURSUANT TO SECTION 5.1 OF THE AERONAUTICS ACT, ALL COMMERCIAL AIR SVC CONDUCTING SKED INTERNATIONAL SVC FOR THE TRANSPORT OF PASSENGERS ON AN INBOUND FLT TO CANADA, EXC DIRECT FLT FM THE USA, MEXICO, CENTRAL AMERICA, THE CARIBBEAN, SOUTH AMERICA, AND ST-PIERRE ET MIQUELON, MUST, FOR THE PURPOSE OF DISEMBARKING PASSENGERS, LAND AT ONE OF THE FLW AP:

-AEROPORT INTL DE MONTREAL-TRUDEAU

-CALGARY INTL AIRPORT

-TORONTO-PEARSON INTL AIRPORT

-VANCOUVER INTL AIRPORT

THIS RESTRICTION DOES NOT APPLY TO ACFT OPERATED IN THE FLW CIRCUMSTANCES:

-TECHNICAL STOPS WHERE PASSENGERS DO NOT DISEMBARK, OR

-AT ALTERNATE AP IDENTIFIED IN A FLT PLAN TO ADDRESS WX, OR

-ACFT SAFETY SITUATIONS, OR

-IN THE CASE WHERE SPECIAL AUTH HAS BEEN GRANTED BY TRANSPORT CANADA: 1-888-857-4003.

F) SFC G) UNL

H1289/20

COVID-19: FLIGHT RESTRICTIONS

UNTIL FURTHER NOTICE, WITH THE INTENT TO PREVENT THE SPREAD OF COVID-19 THROUGHOUT CANADA, AN OPERATOR OPERATING FLIGHTS IN CANADA MUST COMPLY WITH THE PROVISION OF THE 'INTERIM ORDER TO PREVENT CERTAIN PERSONS FROM BOARDING FLIGHTS IN CANADA DUE TO COVID-19, NO. 7 ' DATED JUNE 4, 2020. THIS INCLUDES A REQUIREMENT FOR PASSENGER FACE MASKS. OPERATORS ARE REQUIRED TO NOTIFY PASSENGERS OF THE LATEST MEASURES TO PREVENT THE SPREAD OF COVID-19 TAKEN BY THE TERRITORIAL AND PROVINCIAL GOVERNMENT WITH JURISDICTION AT THE DESTINATION AERODROME FOR THAT FLIGHT.

F) SFC G) UNL

H1158/20

COVID 19: INFORMATION

BORDER SVC ARE TEMPO **SUSPENDED** AT THE MAJORITY OF SMALL AIRPORTS ACROSS CANADA. FOR AN UPDATED LIST OF AUTH AIRPORTS OF ENTRY SEE THE LINK FOR OPEN PORTS OF ENTRY AT WWW.CBSA-ASFC.GC.CA/OFFICES

H0972/20

COVID-19: CREWS/PASSENGERS REQUIREMENTS

ALL FOREIGN MIL AND STATE ACFT WITH STOP OVERS IN CANADA TO CTC SODO(AT)FORCES.GC.CA OR CALL

(204) 833-2500 EXT 2082 PRIOR TO FILING FLT PLAN

F) SFC G) UNL

H0655/20

AIRSPACE SECURITY WARNING ISSUED BY THE DEPARTMENT OF TRANSPORT IN RESPONSE TO THE SECURITY SITUATION IN IRAQ. POTENTIAL RISK FROM MILITARY ACTIVITY AND ANTI-AVIATION WEAPONRY IN IRAQ.

AIR OPERATORS ARE ADVISED NOT TO ENTER THE AIRSPACE OF IRAQ, INCLUDING THE BAGHDAD FIR (ORBB).



H0413/20

AIRSPACE SECURITY WARNING ISSUED BY THE DEPARTMENT OF TRANSPORT IN RESPONSE TO THE POTENTIAL RISK DUE TO THE HAZARDOUS SITUATION CREATED BY THE EXPANDING CONFLICT IN LIBYA. AIR OPR ARE ADVISED NOT TO ENTER THE AIRSPACE OF LIBYA, INCLUDING THE TRIPOLI FIR (HLLL).

H0330/20

AIRSPACE SECURITY WARNING ISSUED BY THE DEPARTMENT OF TRANSPORT IN RESPONSE TO THE POTENTIAL RISK FM HEIGHTENED MIL ACT AND DEDICATED ANTI-AVIATION WEAPONRY IN OR AROUND SYRIA. THIS MIL ACT MIGHT INCLUDE GPS INTERFERENCE, COM JAMMING, AND POSSIBLE ERRANT LONG-RANGE SURFACE-TO-AIR MISSILES ORIGINATING FM SYRIAN TERRITORY, WITHIN THE DAMASCUS FIR (OSTT), AND STRAYING INTO ADJ AIRSPACE. AIR OPR ARE ADVISED NOT TO ENTER THE AIRSPACE OF SYRIA, INCLUDING THE DAMASCUS FIR (OSTT), AND TO EXER **CAUTION** WHEN OPR IN THE AIRSPACE WITHIN 200NM OF THE DAMASCUS FIR (OSTT).

H0047/20

AIRSPACE SECURITY WARNING ISSUED BY THE DEPARTMENT OF TRANSPORT IN RESPONSE TO THE VOLATILE SECURITY SITUATION IN IRAN. POTENTIAL RISK FROM HEIGHTENED MILITARY ACTIVITY AND DEDICATED ANTI-AVIATION WEAPONRY IN IRAN. AIR OPERATORS ARE ADVISED NOT TO ENTER THE AIRSPACE OF IRAN, INCLUDING THE TEHRAN FIR (OIIX

+++++ RESTRICTED AIRSPACE +++++

N0220/20

AMEND PUBLICATIONS: BLASTING ACT WILL TAKE PLACE WITHIN 1575FT RADIUS CENTRED ON 445900N 0625630W (APRX 22NM ENE PORTERS LAKE (WATER))
F) SFC G) 1969FT AMSL

H0083/19

PURSUANT TO SECTION 5.1 OF THE AERONAUTICS ACT, THE MINISTER OF TRANSPORT IS OF THE OPINION IT IS NECESSARY FOR THE PROTECTION OF AVIATION SAFETY AND THE PUBLIC TO PROHIBIT THE OPS OF BOEING 737-8 MAX AND 737-9 MAX ACFT IN CANADIAN AIRSPACE. B737-8 MAX OR B737-9 MAX ACFT ARE PROHIBITED FM OPR IN CANADIAN AIRSPACE EXC FOR FERRY FLIGHTS OR ACFT IN FLIGHT FOR THE DURATION OF THAT FLIGHT ENROUTE TO OR FM OR WITHIN CANADA AT THE TIME THIS NOTICE TAKES EFFECT.
F) SFC G) UNL

+++++ ROUTE +++++

N1323/20

AMEND PUBLICATIONS: V311 BTN YSJ AND YQM:
MOCA TO READ 2600 INSTEAD OF 2500



H1226/20

NOTICE OF TRIAL TO REMOVE FLT PLANNING REQUIREMENTS OF EASTBOUND NORTH AMERICAN ROUTE (NAR) SYSTEM:
 ALL FLTS DEP FM CYYZ, CYUL, KORD, KDTW AND KMSP OPERATING WITHIN THE NORTH ATLANTIC ORGANIZED TRACK STRUCTURE, ARE NOT REQUIRED TO FILE THE ASSOCIATED NAR LISTED ON THE DLY ZBW NORTH ATLANTIC ADVISORY OR THE NAT OTS MESSAGE. ASSOCIATED NAR ARE REFERENCED UNDER THE (JFK DEP) SECTION OF THE ADVISORY.
 DEPS MUST STILL COMPLY WITH ANY DEP ROUTES, STRUCTURES, AND/OR RESTRICTIONS FM THE DEP AIRPORT. OPTIMIZED ROUTINGS CAN ONLY BEGIN FM POINTS WITHIN ZBW AIRSPACE, THE MONCTON FIR, OR BOTH. ONCE INSIDE ZBW AIRSPACE/MONCTON FIR, RANDOM ROUTINGS TO THE OEP ARE PERMITTED. FLT PATHS OF ACFT PARTICIPATING IN THE TRIAL MUST REMAIN AT OR NORTH OF A LINE VITOL-LOMPI. PLEASE REFER TO DLY ZBW NORTH ATLANTIC ADVISORY FOR SPECIFIC INFO AND STATUS OF THIS TRIAL.
 THIS TRIAL MAY BE DISCONTINUED AT ANY TIME, BASED ON OPERATIONAL IMPACT.
 DISPATCHERS SHALL INCLUDE (NO NARS EAST TRIAL) IN THE REMARKS SECTION OF FLT PLANS FOR PARTICIPATING ACFT.
 FLT CREWS ARE EXPECTED TO CARRY APPLICABLE NAR DOCUMENTATION ON THE FLT DECK FOR ALL FLTS, REGARDLESS IF PARTICIPATING IN THE TRIAL OR NOT.

=====
AREA ENROUTE DEPARTURE - DESTINATION
 =====

CZQX GANDER OCEANIC FIR/UIR

Please see section EXTENDED AREA AROUND DESTINATION



[Company NOTAM]

=====
CREW ALERT
=====

SB007/14

SUBJECT: AUTO COST INDEXES
WHEN PLANNING A COST INDEX, 2 OPTIONS ARE AVAILABLE. PILOTS MAY EITHER SELECT A SPECIFIC COST INDEX NUMBER FROM THE LIST, OR THEY MAY SELECT "AUTO". WHEN PLANNING AN "AUTO" COST INDEX, THE SYSTEM WILL REFERENCE THE SCHEDULED "TIME ENROUTE" OPTION AND ATTEMPT TO CHOOSE A COST INDEX WHICH CLOSELY MATCHES THIS VALUE. NOTE THAT THE "TIME ENROUTE" OPTION IS MEANT AS A GATE TO GATE TIME (AS INDICATED ON AN AIRLINE'S FLIGHT SCHEDULE, FOR EXAMPLE). IF A "TIME ENROUTE" OF 2:30 IS SELECTED, THE SYSTEM WILL SUBTRACT THE TAXI TIMES FROM THIS VALUE TO DETERMINE THE SCHEDULED AIR TIME. IT WILL THEN DETERMINE AND USE THE COST INDEX WHICH MATCHES THIS AIR TIME.

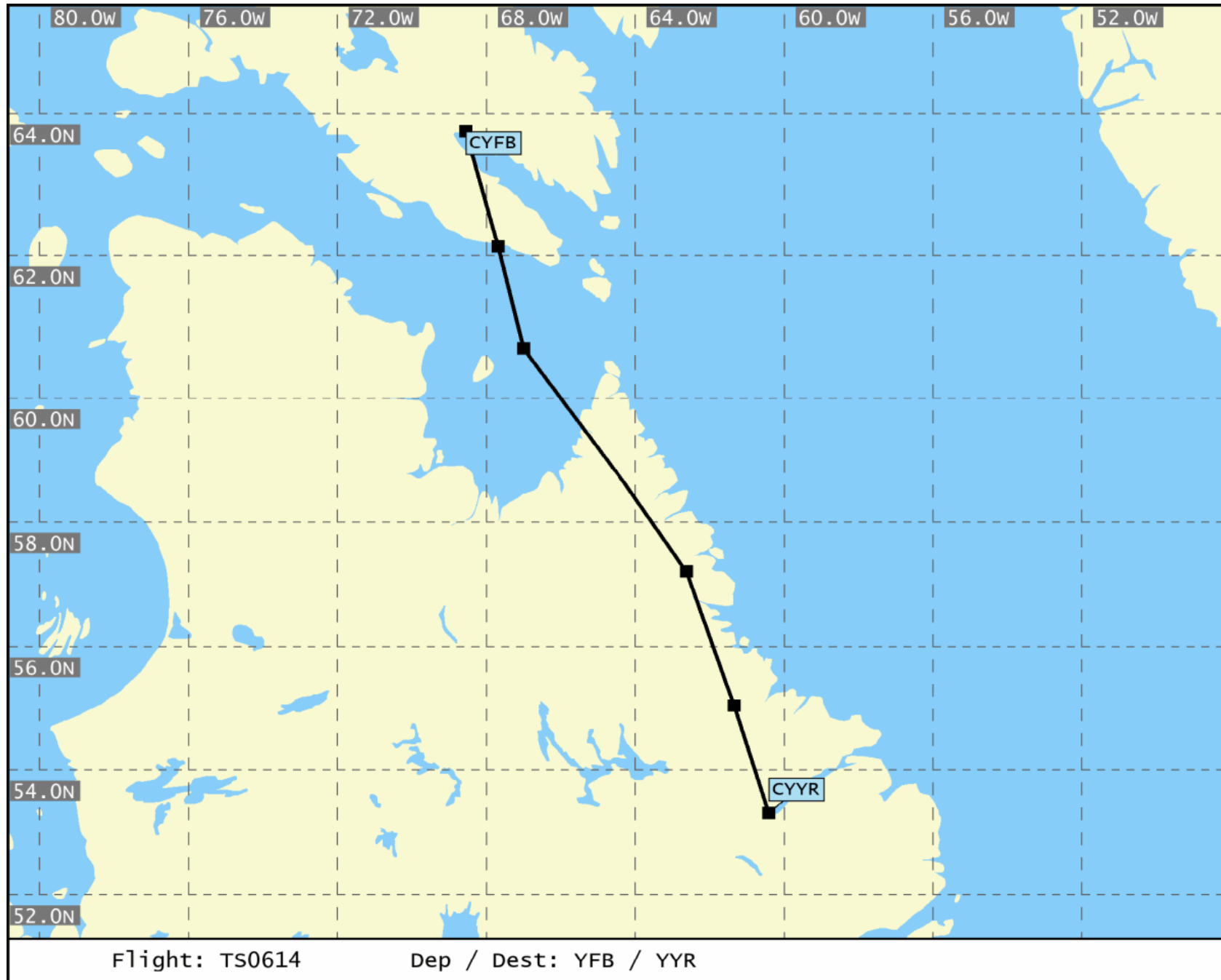
SB003/13

SUBJECT: FLIGHT RELEASE UNITS
ALL FLIGHT CREW: PLEASE PAY SPECIAL ATTENTION TO THE UNITS SELECTION WHEN GENERATING A FLIGHT PLAN. FAILURE TO IDENTIFY THE CORRECT UNITS WHEN REFUELING PRIOR TO FLIGHT CAN RESULT IN DEPARTING WITH INSUFFICIENT FUEL AND/OR AN ERRONEOUS PAYLOAD.

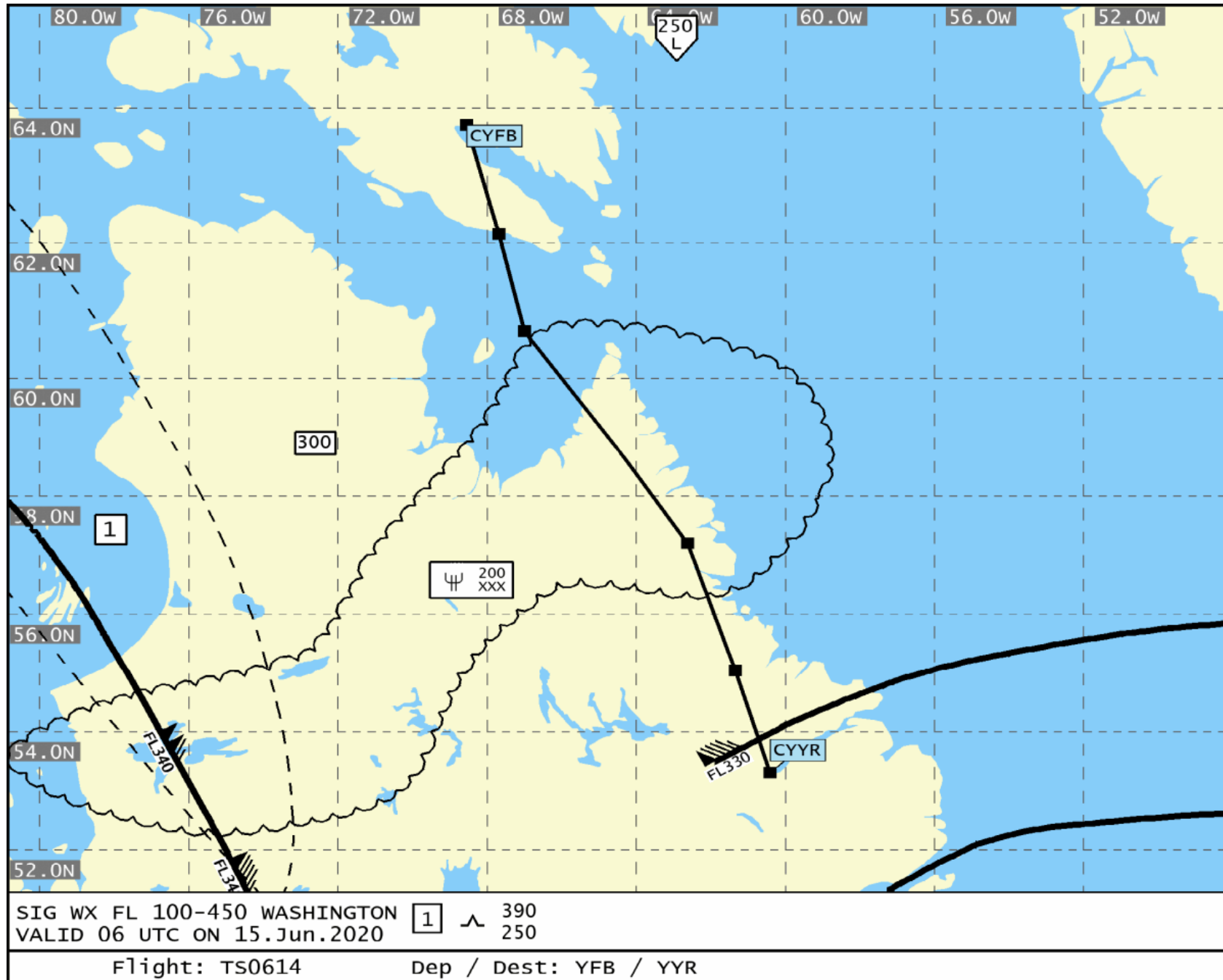
=====
CREW BULLETIN
=====

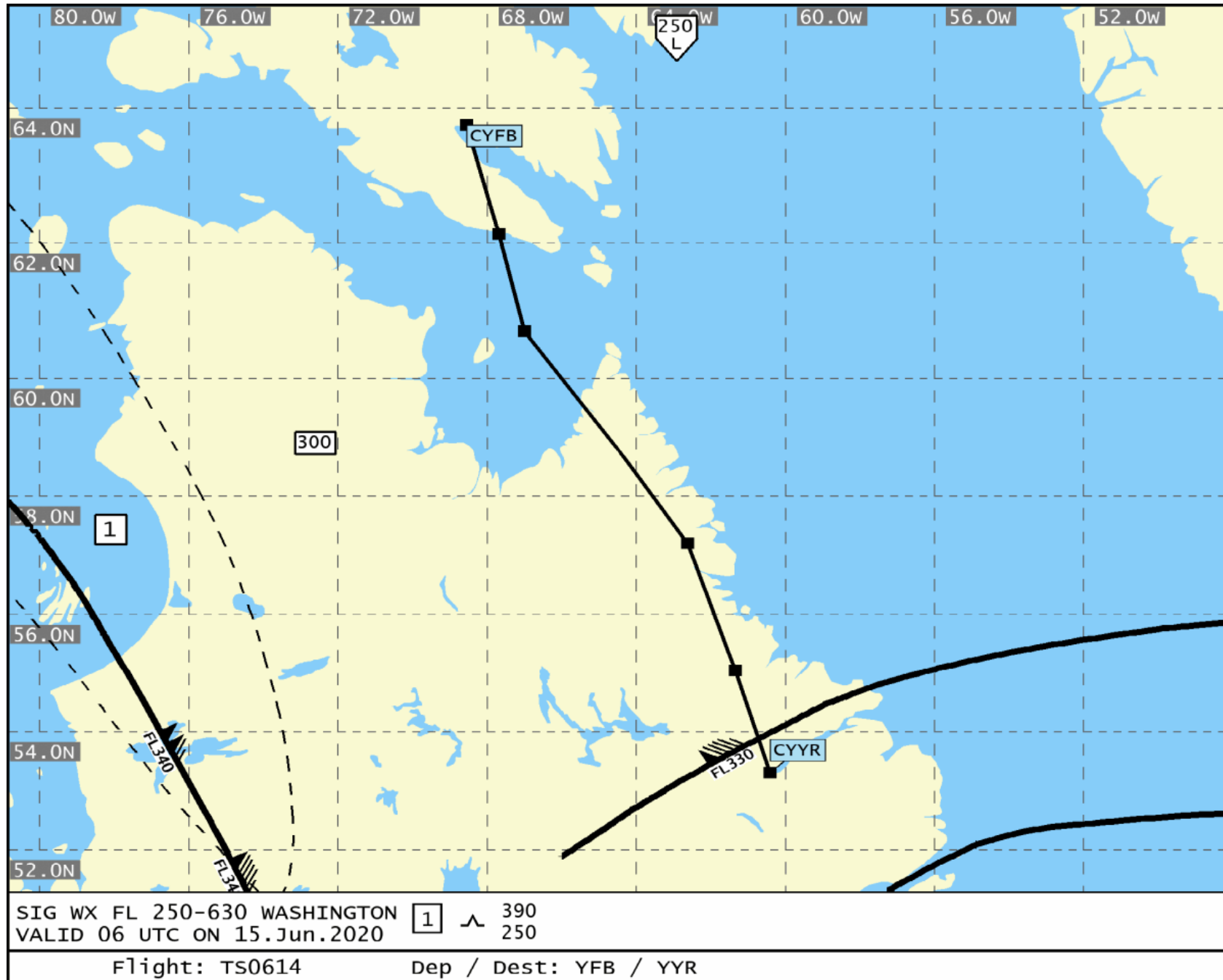
NIL

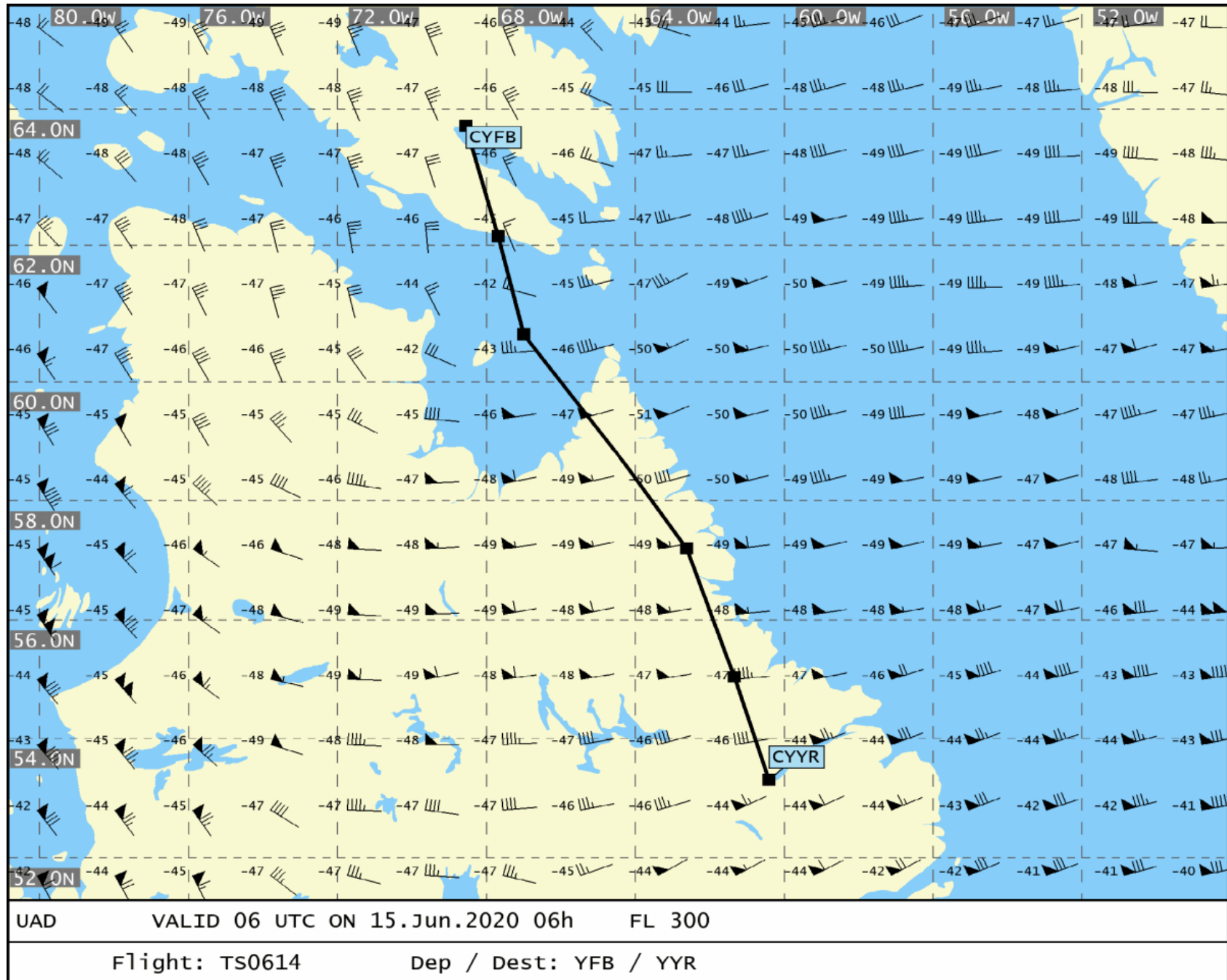
===== END OF LIDO-NOTAM-BULLETIN =====

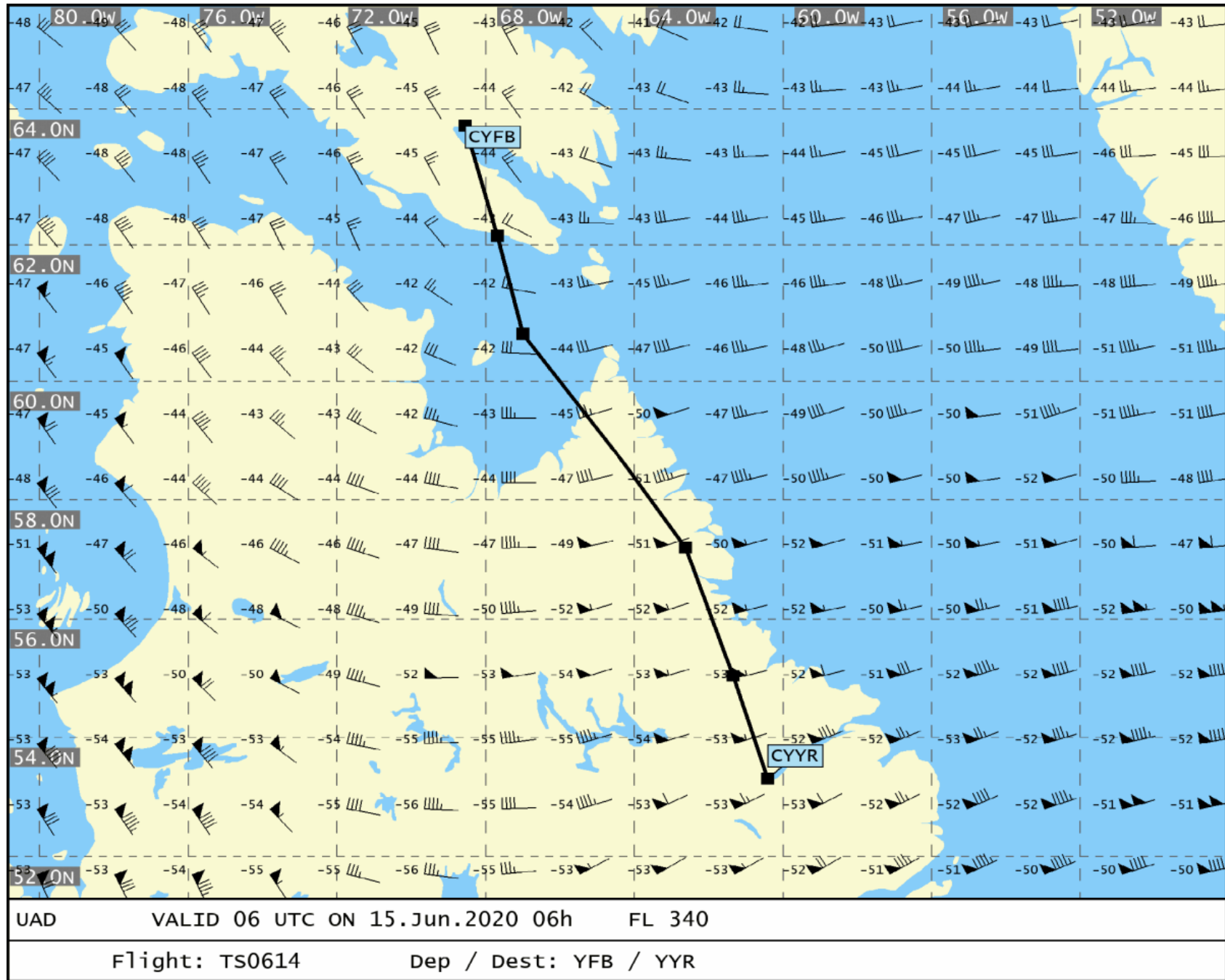


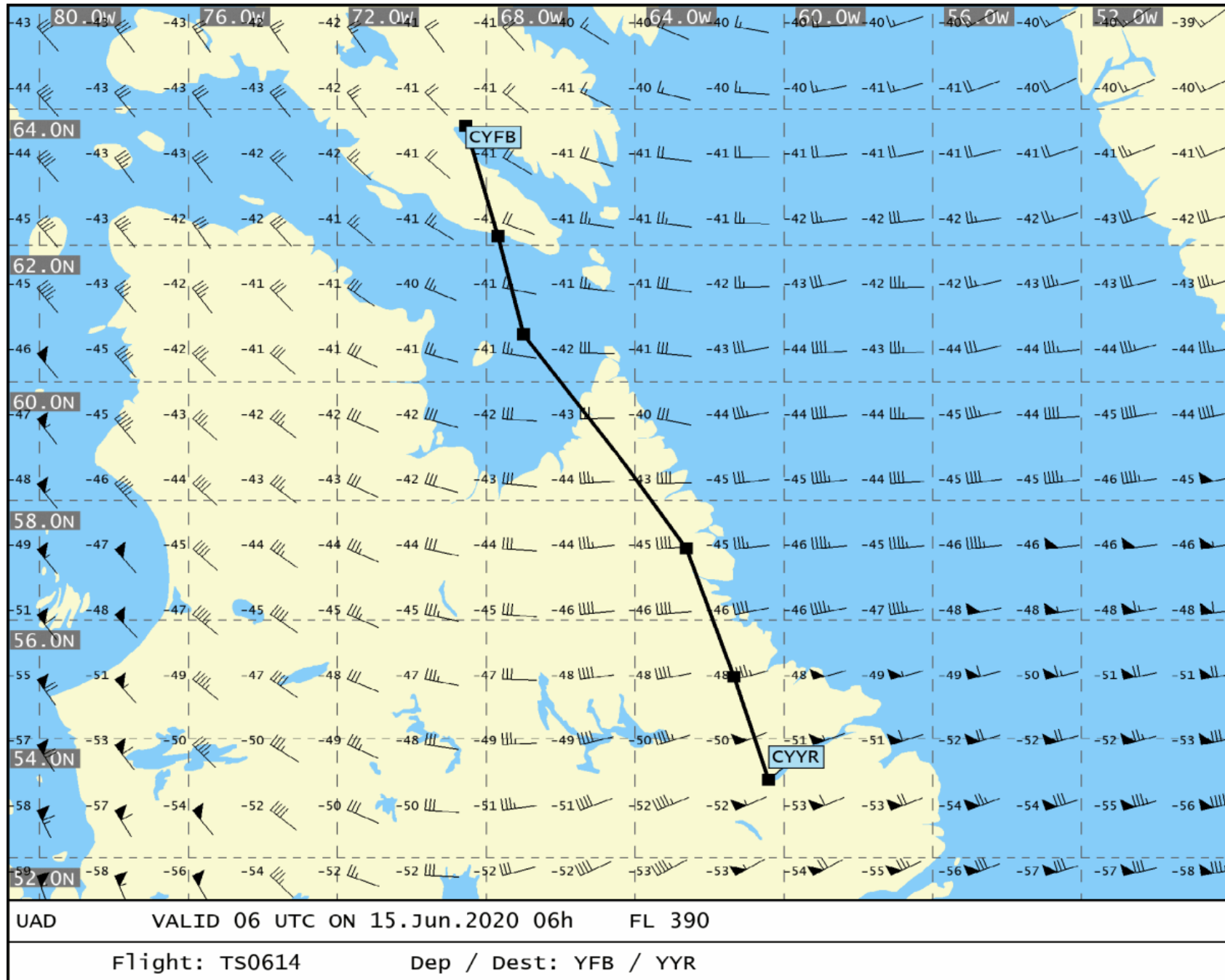
- Not for real world navigation -

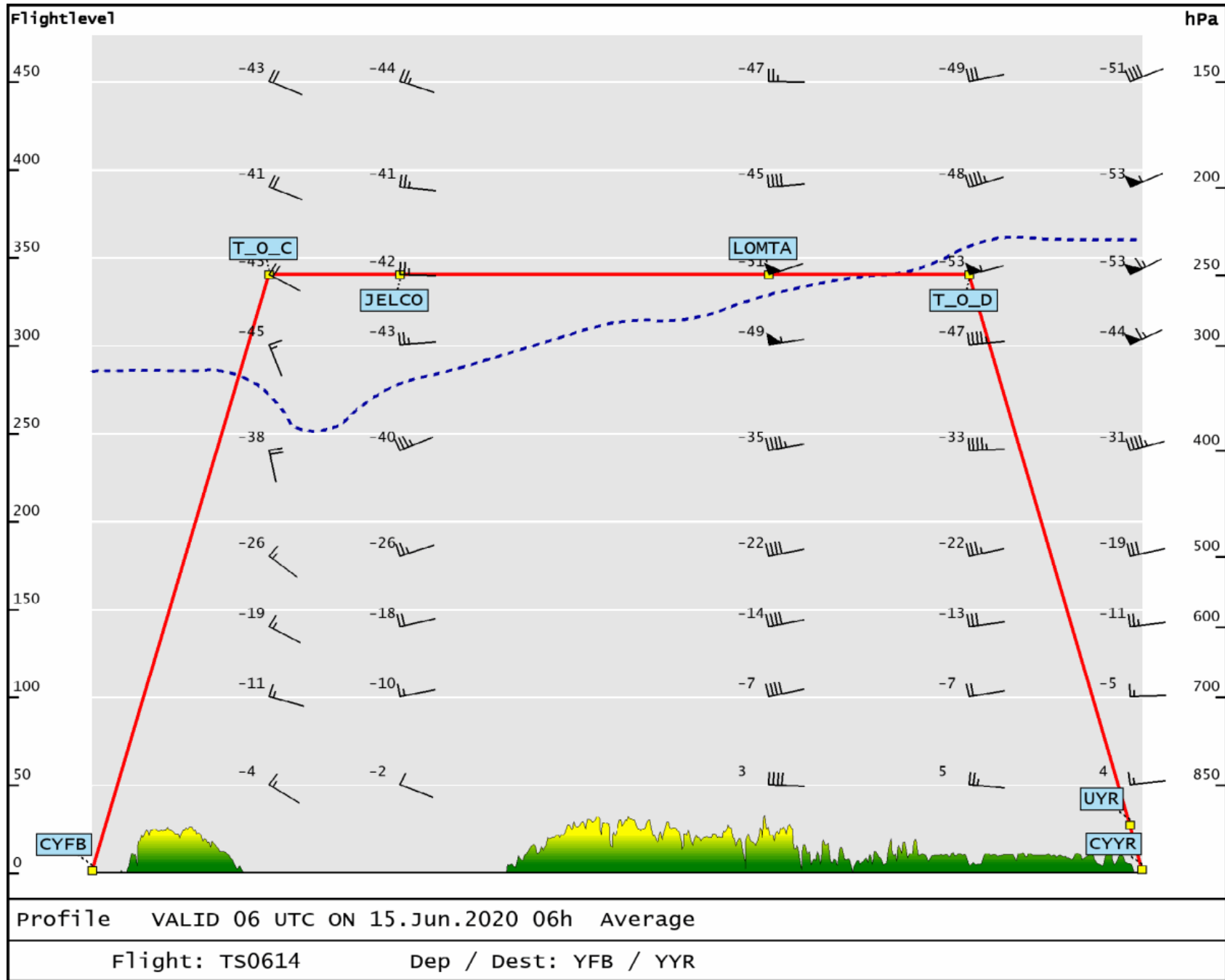














End of Document: Total Number of Pages: 29